

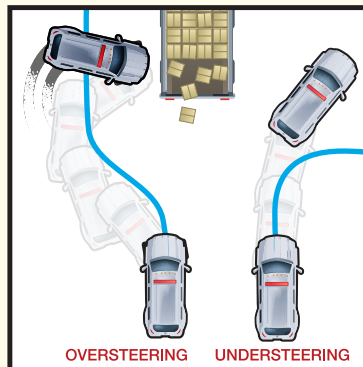
DRIVER SAFETY FEATURE GUIDE



ELECTRONIC STABILITY CONTROL



ELECTRONIC STABILITY CONTROL IS AUTOMATICALLY ON WHEN YOU START YOUR CAR.



ESC ENGAGES AUTOMATICALLY TO PREVENT OVERSTEERING AND UNDERSTEERING.



ESC WORKS BY BRAKING INDIVIDUAL WHEELS AND REDUCING ENGINE SPEED – HELPING YOU MAINTAIN CONTROL.