



ESC ELECTRONIC STABILITY CONTROL

HELPS KEEP YOU ON YOUR DESIRED PATH

More than 10,000 people a year are killed in rollover crashes*

What is it?

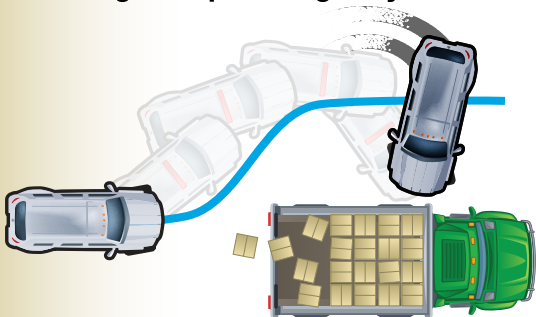
Electronic Stability Control (ESC) is designed to automatically stabilize your vehicle when it senses you may be slipping. ESC controls each wheel to maintain stability.

Getting a handle on extreme maneuvers

ESC will help you steer if:

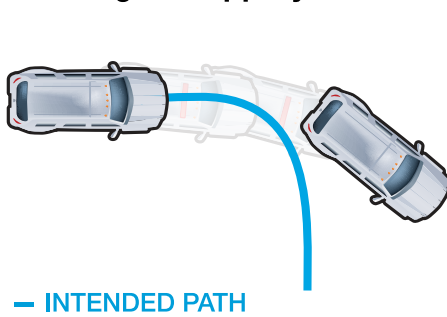
- You turn too fast and the front or rear wheels begin skidding
- Your vehicle loses traction on a slippery roadway, and other emergency situations

Making sharp emergency turns



Helps prevent: Oversteering

Turning on slippery roads



Understeering

Driving with heavy loads

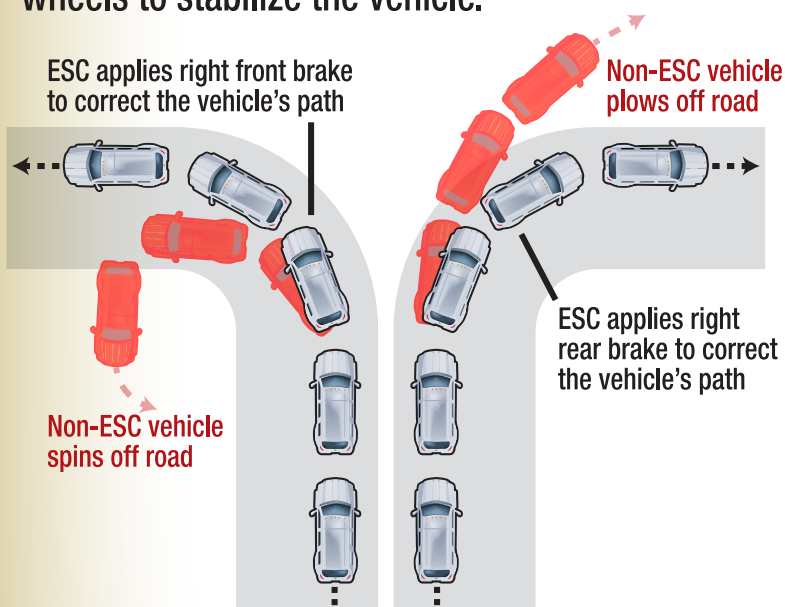


Rollovers

According to the National Highway Traffic Safety Administration, ESC is one of the most effective active safety systems for preventing certain types of rollovers as well as reducing the risk of injury or death in the event of a rollover.

How does it work?

ESC technology senses when a driver may lose control and applies braking to individual wheels to stabilize the vehicle.



Helpful Tips...

- ESC can be less effective on loose gravel and lightly packed snow
- If your vehicle does not have ESC, practice safe driving techniques by taking turns slowly and increasing your following distance in bad weather
- Your vehicle is required to have ESC if model year 2012 or newer

MANDATORY

*www.safercar.gov/Rollover

For more information about your safety systems, check your owner's manual or visit

MyCar
DoesWhat.org
Know More. Drive Safer.

